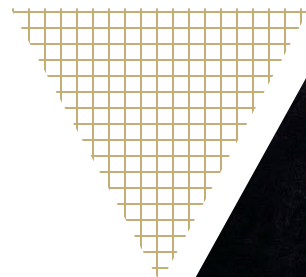


A Tale of Two Unfortunate Incidents

Rachel Bivens

February 29, 2024



Comparing 2021 to 2023

2021

Incident: Gun shot fired inside the Fair

Result: Mass panic, chaos, parties being separated, staff strain etc.

Community: Media barrage – trying to make things worse, high levels of anger directed at event staff, refund requests, uncertainty

Staff: Huge strain and continued stress resulting in loss of long terms staff

2023

Incident: Gun shots fired outside the gates in the back parking lot

Result: Minimal impact to the event

Community: Media calls were minimal and recognized the event for what it was, little to no response from the community

Staff: Minimal strain on staff with non losses as a result of the event

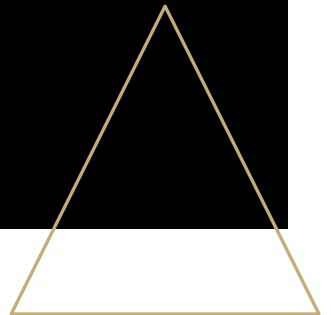
Toolkit	2021	2023
Threat Assessment	No	Yes
Emergency Plan	Yes	Yes
Incident Command Post	No	Yes
Inc. Chain of Command	No	Yes
Communications Toolkits	No	Yes
Adequate Security	No	Yes
Full Staff/Partner Pre-Meetings	No	Yes

Why the differing results?



A Threat Assessment

- A physical review of your property/event location to identify, evaluate and address threats or protectional threats, weak spots, areas of concern and/or areas of weakness in the perimeter etc.
- Goal: to establish procedures to handle a multitude of eventualities prior to them occurring so your response is functional rather than built in a time of panic.
- Provider: threat assessments should be done by a protection specialist rather than internal staff as these professionals are trained to look for specific things that we, as event planners may overlook.





Elements of an Emergency Plan

- General Info
- Some Basics
- Command and Control

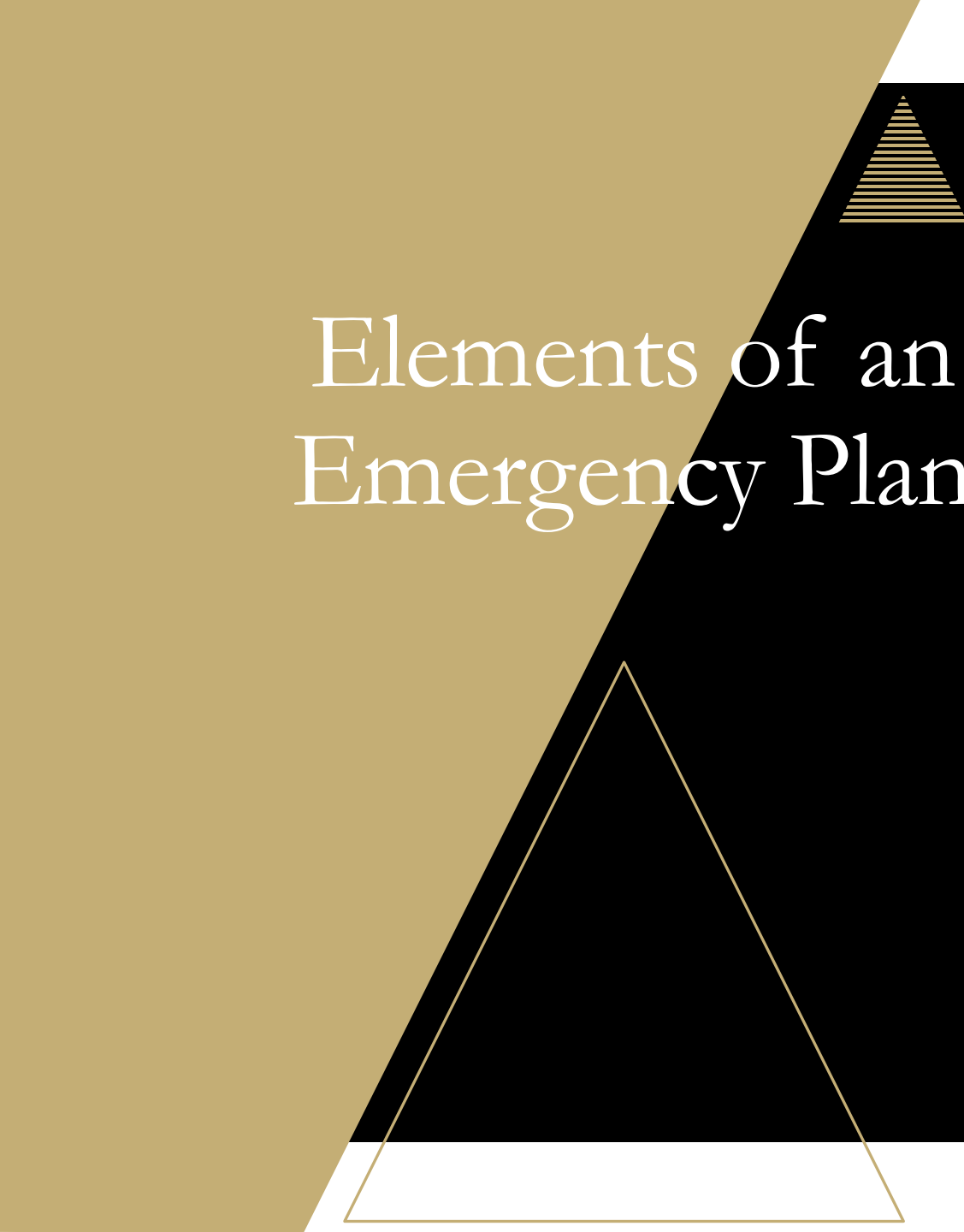
Event Mode vs. Incident Mode

EVENT MODE

There are no incidents or strains on event staff or public safety resources assigned to the event. Individual medical and other emergencies can occur during event mode as long as they do not impact normal event operations.

INCIDENT MODE

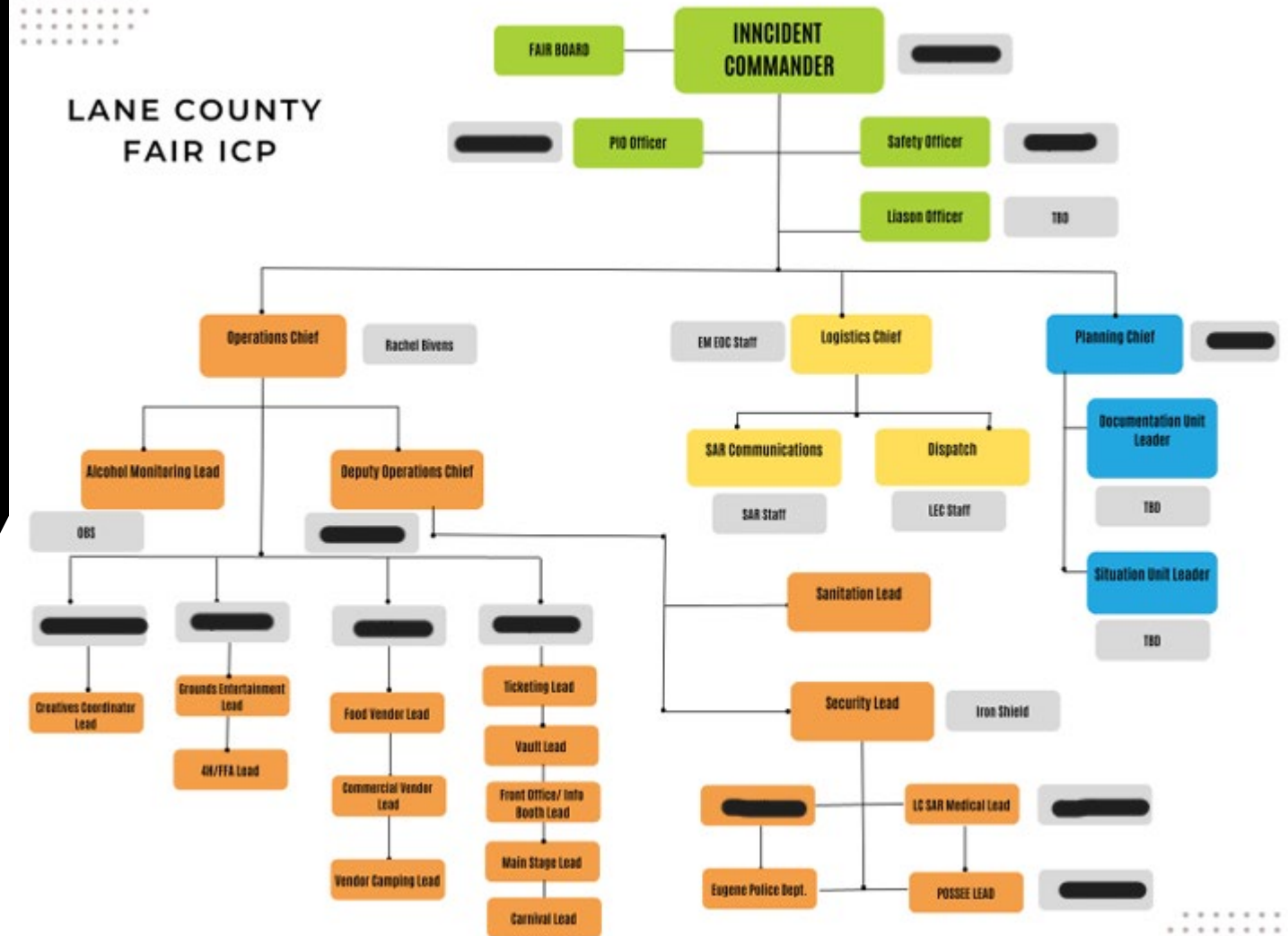
An incident (emergency), has occurred that strains event staff or assigned public safety resources at the event. The incident command post (ICP) may transition into Incident Mode when a large-scale or multiple small-scale issues need additional response resources.



Elements of an Emergency Plan

- General Info
- Some Basics
- Command and Control
- Event ICP Staffing
 - Incident Commander
 - Safety Officer
 - Operations Chief
 - Deputy Operations Chief
 - Dispatch
- Event Operations

Event Operations vs. Incident Operations





Elements of an Emergency Plan

- General Info
- Some Basics
- Command and Control
- Event ICP Staffing
- Event Operations vs. Incident Operations
- Medical/First Aid
- Event Specific Safety Procedures
- Operational Period
- Incident Responses



Incident Specific Responses

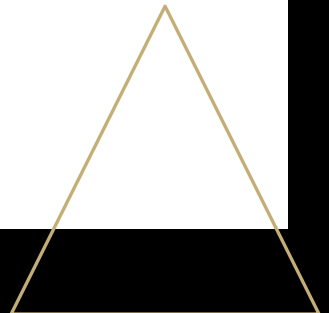
Evacuations

Threatening
with a Gun

Active
Shooter

Bomb
Threats

Natural
Disaster





Elements of an Emergency Plan

- General Info
- Some Basics
- Command and Control
- Event ICP Staffing
- Event Operations vs. Incident Operations
- Medical/First Aid
- Event Specific Safety Procedures
- Operational Period
- Incident Responses
- Documentation
- Attachments



Attachments

Site Map – overhead photo version

Event & Incident Mode Organization Charts


Lost Child/Reunification Forms

Incident Mode Forms – data collection details

Communications Forms – ISC 205 and any you have created yourself

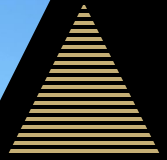
Event Security and Medical Plans





Elements of a Communications Toolkit

- Event Point of Contact List:
 - Done by area of the event rather than the person
- Lost Child Procedure (or anything similar that you have)
- Media Procedure
- Radio Communication
 - Etiquette
 - Calling in Medical issues
 - Calling in Security
- Incident Mode Point of Contact List
- Approved Language/Suggested Statements



Adequate Security

- What to look for when choosing a partner
- Why it isn't just about price

Key Takeaways

ONE:

All the planning in the world will not prepare you for how to cope when something occurs.

TWO:

Planning **WILL** make managing an emergency more seamless decreasing the stress on everyone.

THREE:

The right tools in that planning will make **ALL** the difference.

FOUR:

Those tools won't make a difference though if you don't work through them all with staff and critical parties.

FIVE:

You are all awesome!



Thank you

- Rachel Bivens

COO, Iron Shield Protection Group

- Email: rachelb@ironshieldpg.com

- Phone: 458.261.9282